



Setup for Windows XP

Connect to your
Windows XP machine with:
FileBrowser, NetPortal &
ServerControl

Copyright© Stratospherix 2010

Apple, the Apple logo, iPod, iPod touch, and iTunes are trademarks of Apple Inc., registered in the U.S. and other countries. iPad is a trademark of Apple Inc. App Store is a service mark of Apple Inc.



Setup for Windows XP

Connect to your Windows XP machine with FileBrowser, NetPortal & ServerControl

Setup for Windows XP

Please follow this step by step guide to connect to your Windows XP machine



Click the plus button

Setup for Windows XP

Connect to your Windows XP machine with FileBrowser, NetPortal & ServerControl



Machine Details	
Display Name	None
Name / IP address	None
DNS Domain suffix	None

Display Name

Enter the title of the computer, as it will appear in the Machines list. Leave blank to use the computer Name/IP address.

Name / IP Address

Enter the Network Name of the computer or its IP Address.

The following pages will explain how to obtain this.

Setup for Windows XP

Connect to your Windows XP machine with FileBrowser, NetPortal & ServerControl

1. Launch Windows Explorer.

2. In the left-hand pane, find the “My Computer” node.

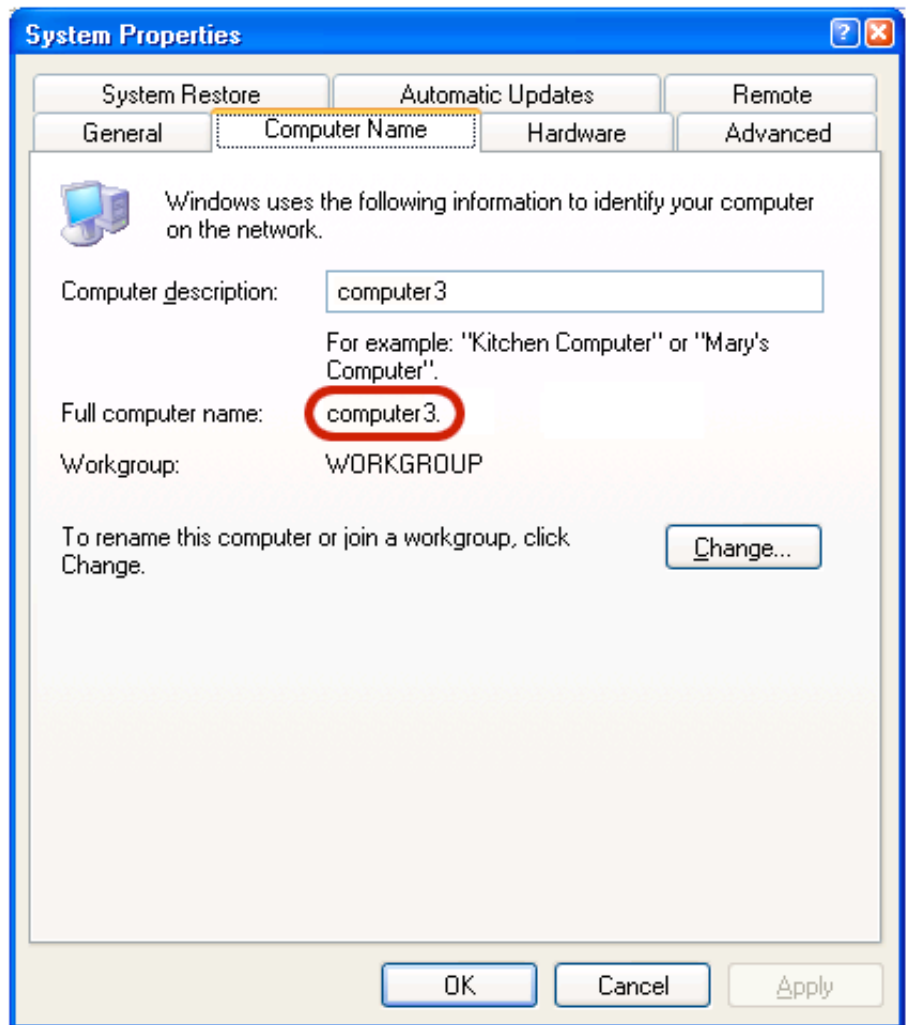
3. Right-click it and choose “Properties”.

4. In the window that appears, left-click the “Computer Name” tab. You should now have a window that looks like the following.

5. The text ringed in red is your computer name, up to but

not including the first dot character. So from the example, this is “computer3”.

6. This will be the text to enter in the App’s “Name/IP Address” field.



Setup for Windows XP

Connect to your Windows XP machine with FileBrowser, NetPortal & ServerControl

If when you later attempt to connect an error is displayed “Can’t find server“ you may need to use the IP Address. To find this use the following steps.

If you start a Command Prompt via the Windows start menu->All Programs->Accessories->CommandPrompt, a window with a black background should appear, if you enter the command “ipconfig” into it, you should get output similar to the following.

Windows IP Configuration

Ethernet adapter Local Area Connection:

Connection-specific DNS Suffix . :

IP Address : 192.168.1.12

Subnet Mask : 255.255.255.0

Default Gateway : 192.168.1.1

The “IP Address” is the information we’re looking for, and is 4 sets of numbers separated by dot characters, so is “192.168.1.12” in the example above.

Please enter the IP address into the App’s “Name/IP Address” field and try to connect again.

Setup for Windows XP

Connect to your Windows XP machine with FileBrowser, NetPortal & ServerControl

DNS Domain Suffix

This field is normally only required in a work environment. It is almost never used on a home network.

If the computer has a DNS name, enter the suffix here. Leave blank if an IP address was entered in the Name/IP address field above.



```
C:\Users\John Smith>ping computer3
```

```
Pinging computer3.stratospherix.com [192.168.1.3] with 32 bytes of data:
```

```
Reply from 192.168.1.3 time=1ms
```

```
Ping statistics for 192.168.1.3
```

```
    Packets: Sent = 4, Received = 4, Lost = 0 (0% loss),
```

```
Approximate round trip times in milli-seconds:
```

```
    Minimum = 0ms, Maximum = 1ms, Average = 0ms
```

In the example above the DNS domain suffix is “stratospherix.com“, so this should be entered in to the App’s “DNS Domain Suffix“ field.

Setup for Windows XP

Connect to your Windows XP machine with FileBrowser, NetPortal & ServerControl

Username

Enter a Network Logon name here. The following section describes how to find your username

1. Launch “Control Panel” via the Windows Start menu.
2. If on the right-hand-side, the title is “Pick a category”, do the following, otherwise go to step 3. Click the “User Accounts” link and on the following page click “User Accounts” in the lower section of the right-hand pane. This should bring up a new window showing all the users on your PC. Go to Step 4.
3. Double-click “User Accounts” and a new window should appear showing all the user accounts on your computer in the lower part of the window.
4. The Window that appeared (via either step 2 or step 3) should have a title of “Pick a task...”. In the lower section of the window each account has an icon and 2 or 3 lines of text to the right of it. The first line is the username, and one of them should be familiar to you. We recommend choosing one that has “Computer administrator” written under it. Enter this first line into the App’s “Username field.
5. If the account you have chosen does not say “Password protected” under it, then it has no password. This is not essential for Windows XP, but is highly recommended. If it is blank, then in the App you will need to tap the “Blank” button on the Password field. If the account is password protected, then the password you enter in the App is simply your password, but be careful when typing it because it is case-sensitive.



Setup for Windows XP

Connect to your Windows XP machine with FileBrowser, NetPortal & ServerControl

6. If the account you chose does not say “Password protected” under it, you can create a password by clicking the user and on the following page, clicking the “Create a password” link and follow the instructions. Having a password will mean that you will need to enter it each time you boot your Windows PC.

Password

Enter the password for the user that was chosen on page 7
Passwords are case-sensitive, so please take care when entering it.

Setup for Windows XP

Connect to your Windows XP machine with FileBrowser, NetPortal & ServerControl



Save Your Setup

Tap save and your setup is complete.

Setup Complete

You should now be able to connect to your Windows XP Computer. If you get a

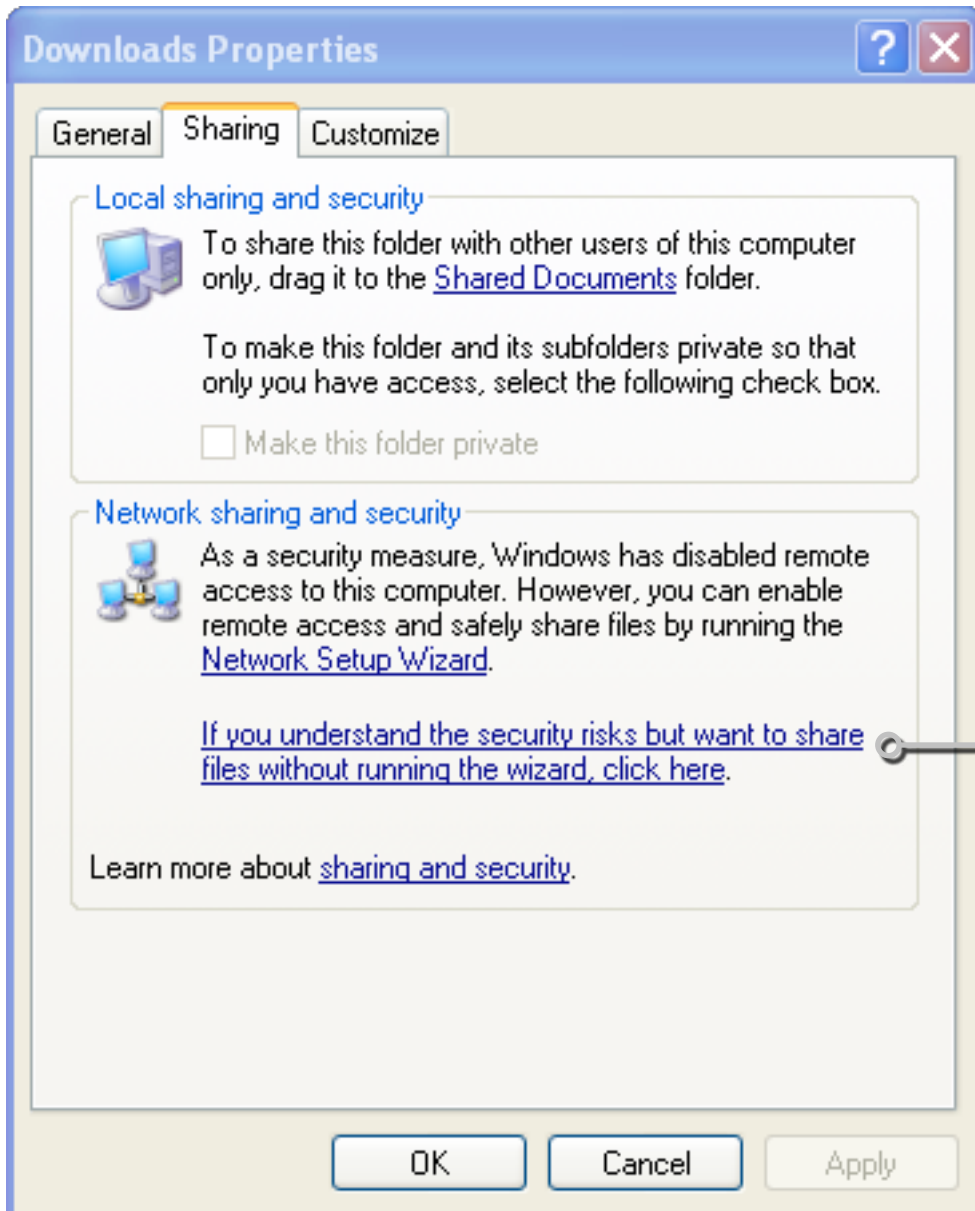
“Connection Refused” or “Timed out connecting” error, either a firewall is blocking the network, or SMB file sharing hasn’t been enabled. Please see the following sections to check this.

Setup for Windows XP

Connect to your Windows XP machine with FileBrowser, NetPortal & ServerControl

Share a Folder

When the app connects to your Windows XP machine, if you don't see a list of Share names or if you get an error "Connection refused"



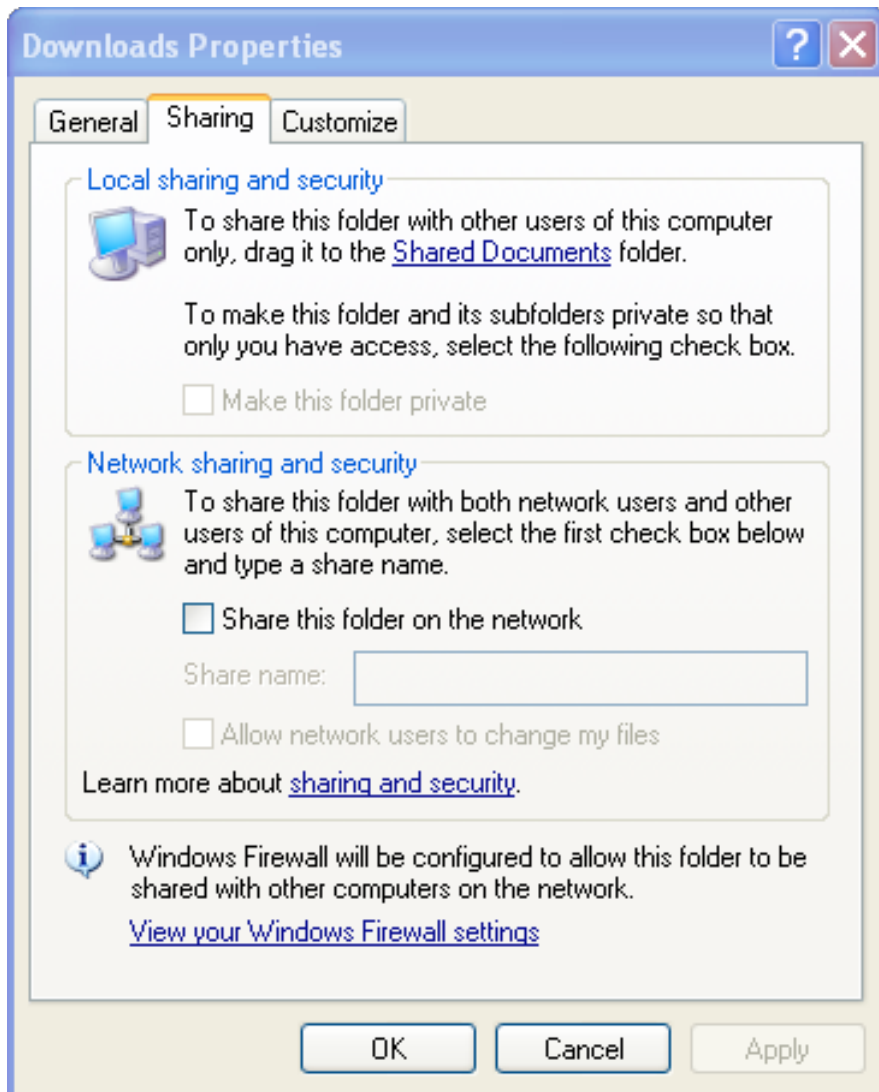
file sharing may not be enabled or you may not be sharing any folders. The following section describes how to rectify this.

Click this to enable file sharing

If you select a folder in windows explorer, right click and choose "Sharing and Security..." and the window shown above appears then file sharing is not enabled.

Setup for Windows XP

Connect to your Windows XP machine with FileBrowser, NetPortal & ServerControl

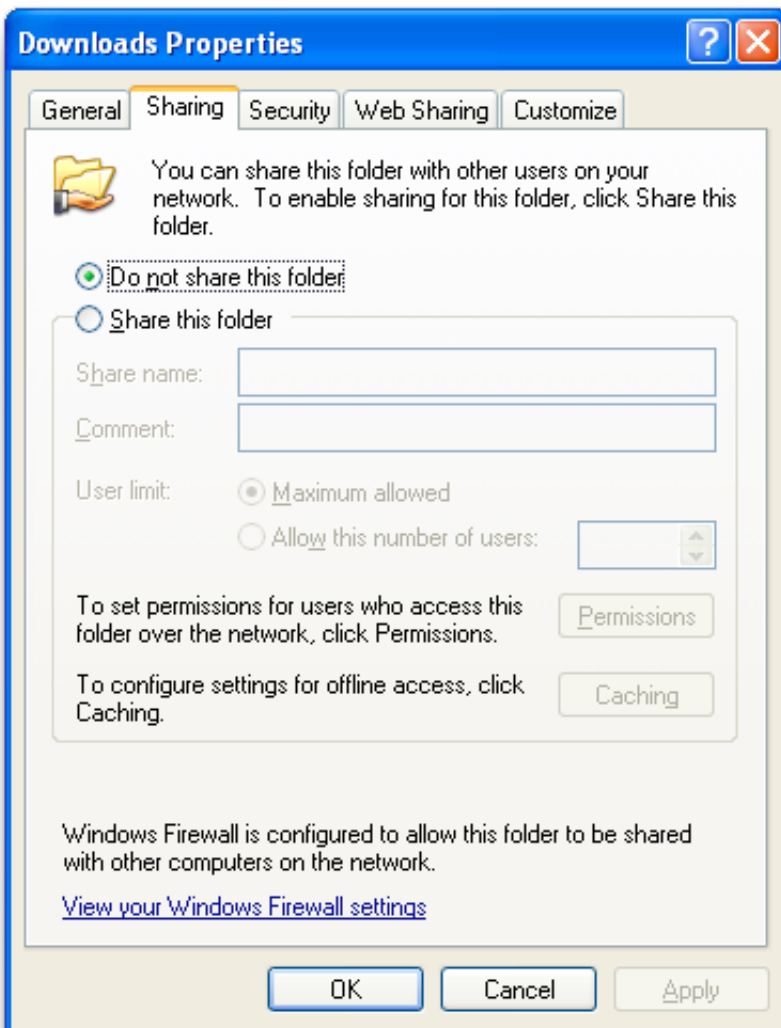


Share a Folder

If you see the window below tick the “Share this folder on the Network” box and then enter a share name and click ok. If you do not see the window below then continue to page 12.

Setup for Windows XP

Connect to your Windows XP machine with FileBrowser, NetPortal & ServerControl



Share a Folder

Select “Share this Folder”, enter a Share name and click ok.

Setup for Windows XP

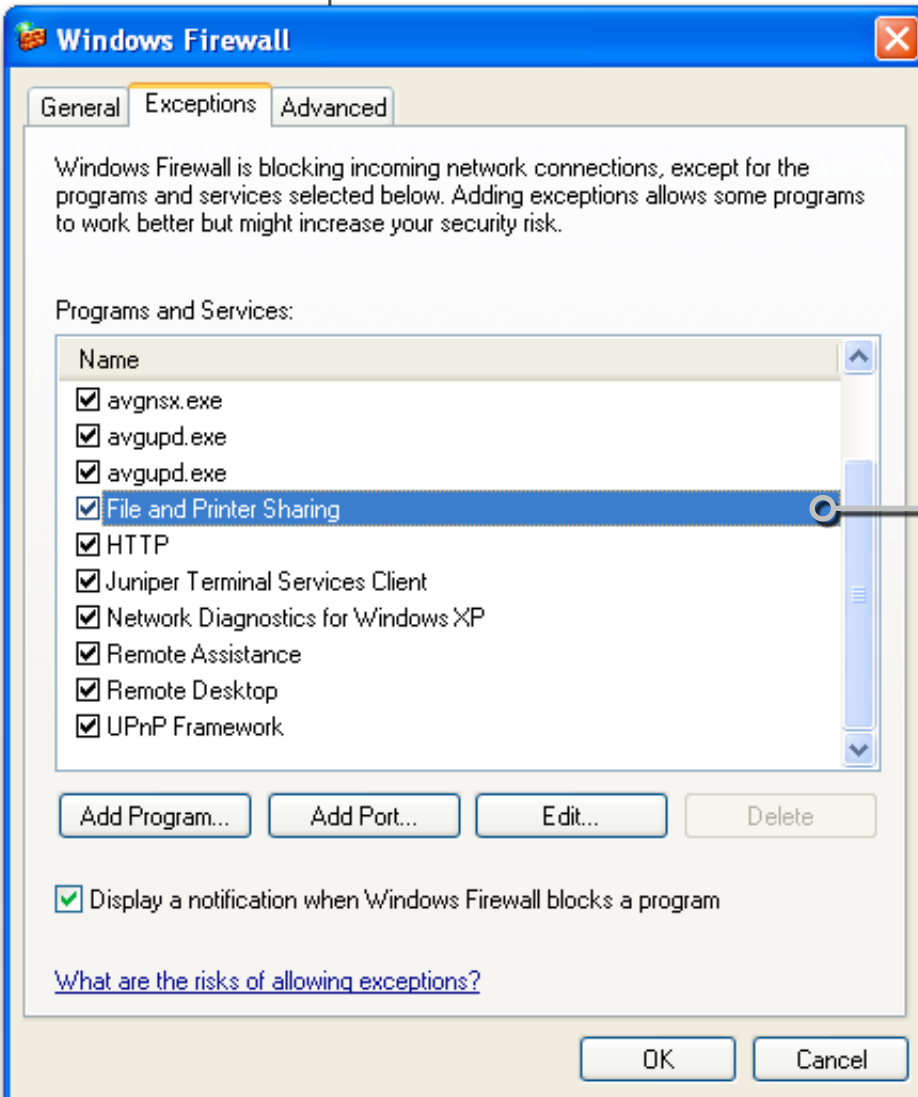
Connect to your Windows XP machine with FileBrowser, NetPortal & ServerControl

Firewall

After checking your File Shares if you still cannot connect windows firewall may be blocking the network.

Launch Control Panel > Windows Firewall

Select the exceptions tab as shown below.



Ensure this is ticked

If you are not using windows firewall but are using a third party product such as ZoneAlarm or Norton Internet Security then a similar exception will be necessary.

Setup for Windows XP

Connect to your Windows XP machine with FileBrowser, NetPortal & ServerControl

Troubleshooting

Timed out connecting

Firewall software is the most likely cause of this. Temporarily switch off the firewall software to prove whether this is the problem. If FileBrowser/NetPortal now connects, then you need to exclude “File & Printer Sharing” or open TCP Port 445.

Name resolution. Try using the IP address of the computer/NAS that you wish to connect to.

Outside WiFi range. To access you computer when away from your home or office WiFi network, please see our External Access Guide (<http://www.stratospherix.com/products/guides/SetupForExternalAccess.pdf>).

Connection Refused

File Sharing is not enabled, or there are no folders shared.

Name resolution issue. Try using the IP address of the computer/ NAS that you wish to connect to.

Unknown username/password

If your computer is in a Windows domain, check that you are using the Windows Domain (not DNS domain) prefix, such as “StratDom1\MyUser”.

Windows returns this misleading error if file sharing is not enabled. Please see page 10 for details of how to enable File Sharing.