



ServerControl

Manage your Servers Anywhere

Copyright© Stratospherix 2010

Apple, the Apple logo, iPod, iPod touch, and iTunes are trademarks of Apple Inc., registered in the U.S. and other countries. iPhone is a trademark of Apple Inc. App Store is a service mark of Apple Inc.

The Main Views

The Main Views are those indicated by 5 icons at the bottom of the screen when you first launch ServerControl.



The Favorites, Recents and Machines views list Servers or Workstations that are known.



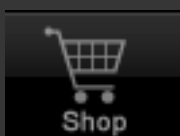
Machine This view lists every machine that you have added, in alphabetic order by display name.



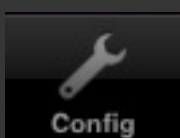
Favorites This view lists your favorite machines selected from the Machines view, ordered any way you choose.



Recents This view shows a history of machines you have connected to, with the most recent shown first.



Shop This page allows you to purchase additional features.



Config This page allows you to configure ServerControl's global settings.



Bookmarks This view shows Bookmarks, which are links to folders or documents that you have previously browsed to and created Bookmarks for. This item won't appear until "Full Core Features" has been purchased.

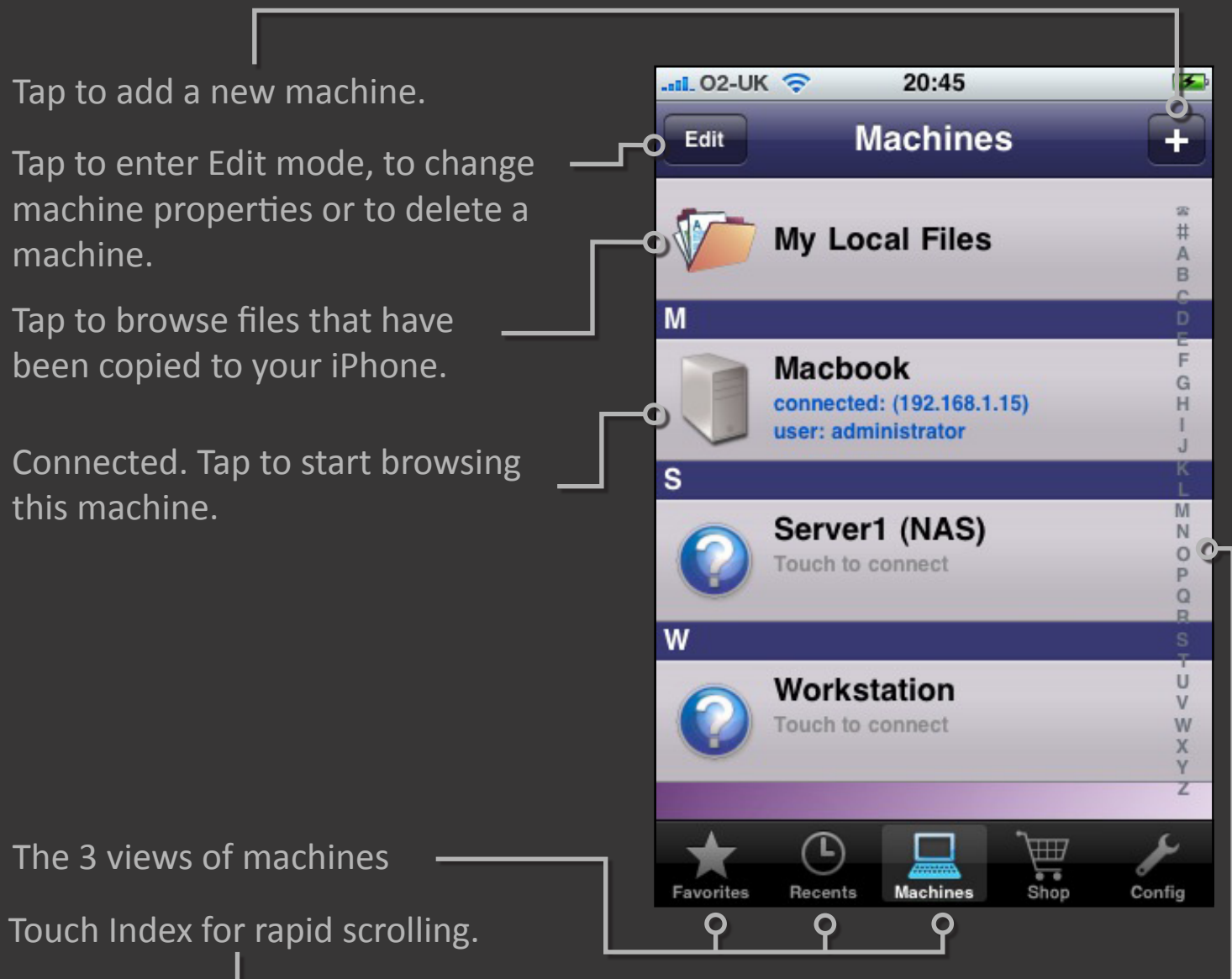
Machines

This view lists all machines known to ServerControl, listed alphabetically. Each entry shows the display name, and the connection status of that machine.

A blue question mark icon indicates that the machine is not connected.

To connect to a machine, simply tap it. A connection icon will animate whilst the machine is being contacted, and will change to a server icon once connected and authenticated.

The diagram below points out the main features of the Machines View.



Adding a Machine

The first thing to do in ServerControl is to add a Machine. Tap the + icon in the top right corner, and the page shown below will appear.

Display name can be any text you like.

Enter Computer name (NetBios or DNS), or an IP4 address. If you enter a DNS name, don't enter the DNS suffix here.

If the machine is in a DNS domain, enter the DNS suffix here (mycompany.com, for example).

Choose whether you want this machine to connect automatically every time you run ServerControl.

“Blank” will use an empty username. “On demand” will prompt on each connection. Click “Edit...” to enter a username.

The screenshot shows the 'New Machine' configuration screen. At the top, there are 'Cancel' and 'Save' buttons. The main section is titled 'Machine Details' and contains the following fields:

- Display Name:** Set to 'None'.
- Name / IP address:** Set to 'None'.
- DNS Domain suffix:** Set to 'None'.
- Auto Connect:** A toggle switch currently set to 'OFF'.

Below the 'Machine Details' section is the 'Login As...' section, which includes:

- Username:** A field with three buttons: 'Blank', 'On demand', and 'Edit...'.
- Password:** A field with three buttons: 'Blank', 'On demand', and 'Edit...'.



Username: There can be some confusion over the format of the Username, as this can vary from one Windows application to another.

If the machine is in a Windows Domain, prefix the Username field with the Windows name of the domain, followed by a backslash. Use the same domain name that you would normally use to log on

ServerControl

Manage your Servers Anywhere

to this machine. For example, if the domain is “company”, and your user name is “fred”, enter “company\fred” as your Username.

If the machine is in a Workgroup, just enter the Username. Do not prefix with the Machine name or Workgroup name.

Mac Machine Name: You can find your Mac’s machine name in System Preferences->Internet & Network->Sharing. Tap the “Edit...” button to view the network name of your Mac. This will usually be something like “Freds-iMac.local”. Enter “Freds-iMac” in the Name field and enter “local” (without the leading dot) in the DNS Domain suffix field.

Administrator Connections

In order to initiate a Shutdown or a Reboot or to control services, Windows requires an Administrator connection. On Windows 2000, XP, 2003 and 2008, a member of the Administrators group will suffice. However, on Windows Vista and Windows 7, the real Administrator account is disabled by default. Connecting as any other user, even though Control Panel->User Accounts says the user is an Administrator will not work.

Enabling the Administrator Account

1. Start a Command Prompt as Administrator by right-clicking on the "Command Prompt" item in the Start Menu and choose "Run as administrator". Click Continue in the popup message box.
2. In the new command prompt, enter
`"net user administrator /active:yes"`.
3. Go to Control Panel->User Accounts and click the link "Manage another account" and you will see all your users, and will see a new one that is named "Administrator", with "Administrator" listed under it as well. This is the real Administrator account. You will need to click it and then click "Create a password" and then enter a strong password, otherwise your system will not be secure.
4. You will now be able to configure ServerControl to use "Administrator" as the username, and the password you have just created.
5. If you want to disable the Administrator account again, just repeat step 1 and step 2, but enter
`"net user administrator /active:no"`.

Machine Features

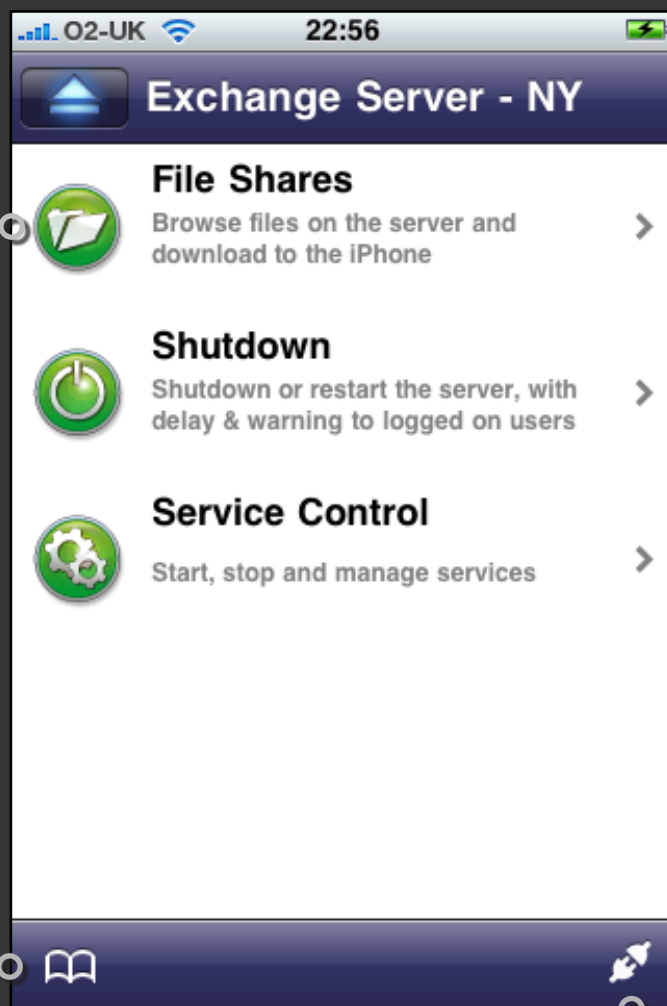
When you tap a connected Machine, a list of features supported for that machine are shown, as illustrated below.

Tap one of the features to launch that feature.

File Shares will only be available after purchasing "Full Core Features".

Tap to bring up the Bookmarks page.

Tap to disconnect from the server.



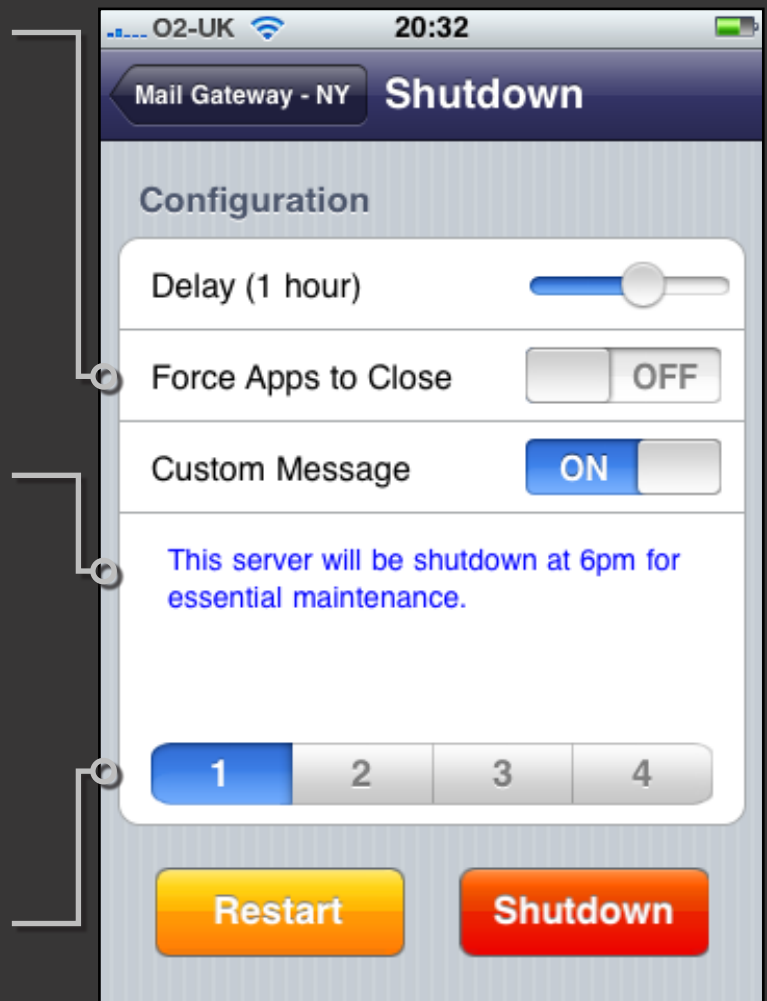
Shutdown Service

The Shutdown Service allows you to initiate a shutdown or reboot of the current machine. This can be immediate or delayed by an amount of time you choose.

Switch this to ON to force running apps to close, otherwise those apps may prevent the Shutdown/Reboot. If apps are forced to close, open files may not be saved, risking the loss of unsaved work.

Type the message here that you wish logged-in users to see when a Shutdown or Reboot is initiated. Leave it blank for the Windows default message, which varies depending on the version of Windows.

Up to 4 custom messages can be stored.

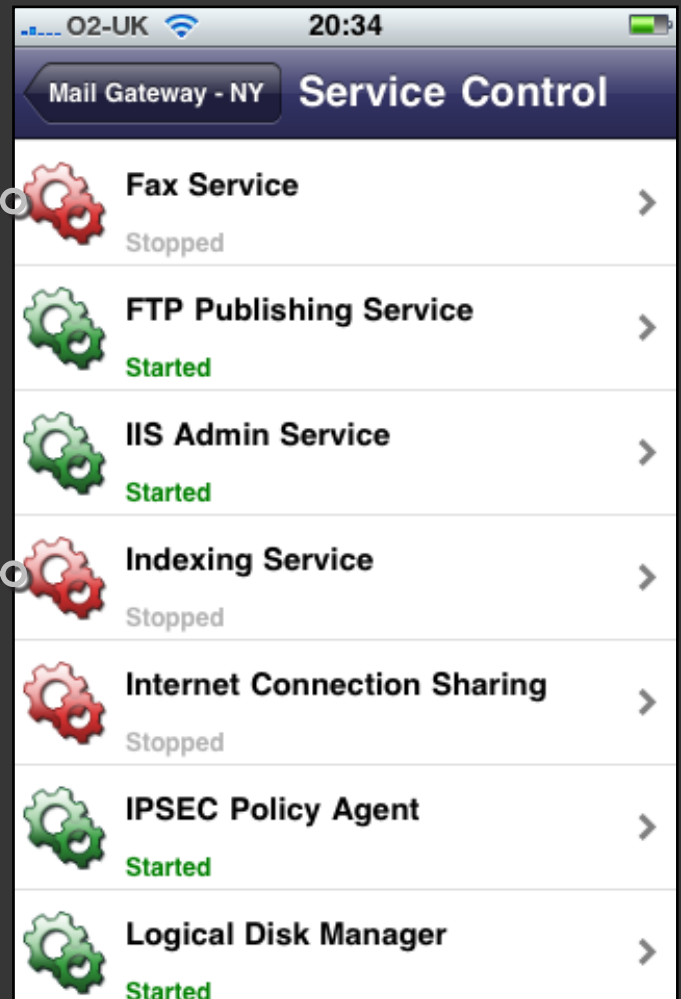


Service Control

Service Control allows you to view all services on the current machine and see which are running and which are stopped.

Red icons indicate stopped services and green icons indicate running services.

Tap a service to open the detail screen for it.



Service Control Detail

Tapping on a service invokes its detail screen. From here you can see the startup type, the services that depend on this service, and the services that this service depends on.

Tap the blue link to change the startup type of the service. Only do this if you are confident this will be OK.

In this example, the W3SVC service depends on the 2 services shown. Both of them must be started before this service can start.

Tap the blue link to navigate to the detail view of that service.

Only the buttons that apply to the current service will be shown. If the service doesn't support being stopped, for example, there will be no Stop button.





Full Core Features

in-app purchase

The rest of this guide refers to the file browsing features which are available after purchasing “Full Core Features” of ServerControl.

Browsing a Machine

Once a machine is connected, tapping on it will invoke the list of available features. The feature “File Shares” allows you to access files on remote computers. The first thing it does is to enumerate the network shares for this machine.

On some Linux machines, if you do not have sufficient rights to enumerate shares, but you know the Share name, you can add the Share manually by tapping the + button on the Shares screen and entering the name.

The diagram below shows the Shares of a connected machine.

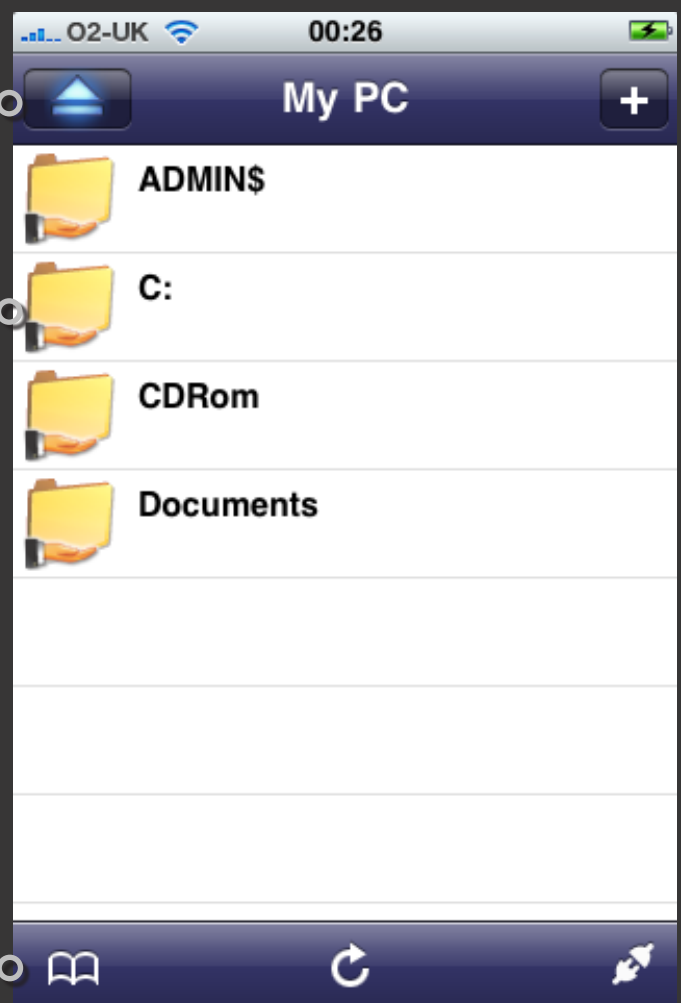
Tap to eject this machine and go back to the previous machine view.

Tap to start browsing this Share.

Tap to bring up the Bookmarks page.

Tap to refresh the Shares on this machine.

Tap to disconnect from the server.



Browsing Folders

Tapping on a Share name connects to that share and enumerates its folders and files.

Tapping a folder in this view navigates into it in a hierarchical manner.

From this page, you can view files, add a Bookmark to this Folder, refresh this folder, and do other things as outlined below.

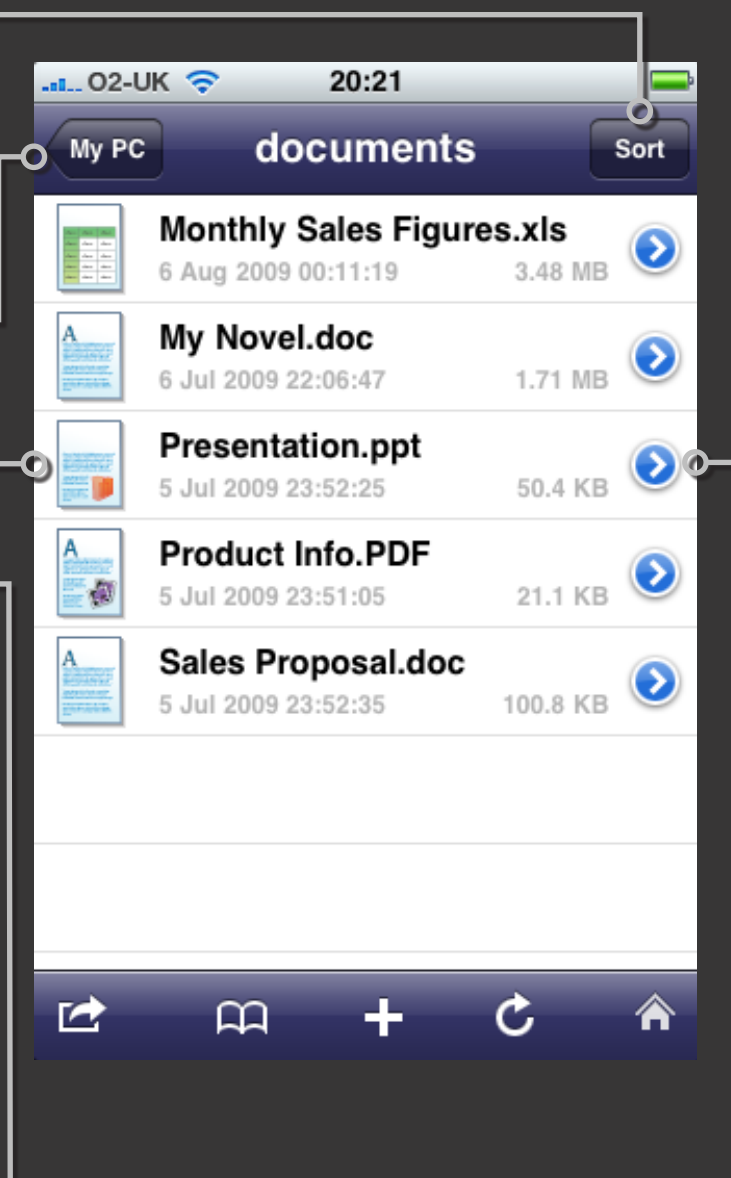
The diagram below shows the files within a folder on a network Share.

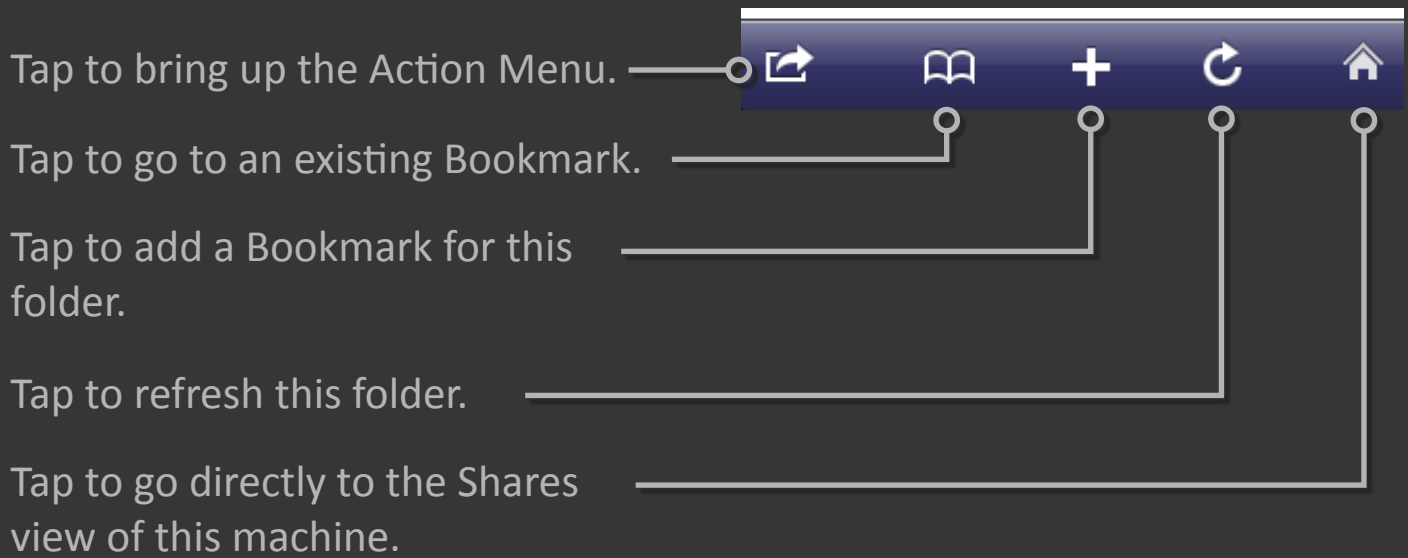
You can sort this view in a variety of ways, to help you get to the file you want quickly.


Tap this to go back up to the parent folder, or Share list.

Tap to view this file.

Tap to bring up the Action Menu, to Rename, Email, or Copy this file, without having to open it.





 A file can be deleted by swiping across an entry and tapping the “Delete” button (unless “Delete files and folders” is disabled in the Config tab).

Viewing a Document

Tapping on a file listed in a folder will read that file from the server and then open it.

From this page, you can copy the file to a local folder on your iPhone for later viewing, e-mail it as an attachment, or Bookmark it for rapid navigation to this file next time.

The diagram below shows a document being viewed with menu bars displayed.

Tap this to go back up to the parent folder.

Tap the document to toggle the menu bars on/off, allowing the maximum amount of screen to be used for viewing.

Rotate your iPhone for Landscape or Portrait viewing.

From the Action Menu, you can edit this file if it's a text file, such as HTML or XML.



Invoking the Action Menu from the Folder Browser

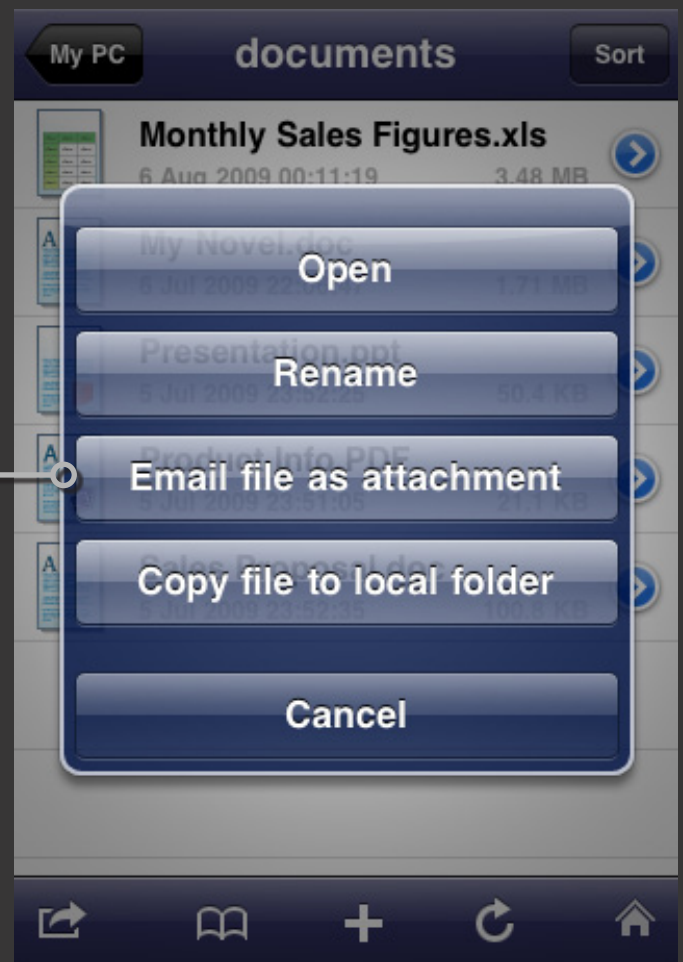
Whilst browsing a folder, tapping the Action Menu icon will bring up the menu, shown below, from where you can open the file, rename it, e-mail it as an attachment, or copy the file to a folder on your iPhone.

When copying a file to a folder on your iPhone, the files are secure because they can only be accessed by ServerControl. No other application can access them.

Tapping this will invoke the built-in e-mail App and will automatically use this file as an attachment. Simply choose the recipients from your Contacts and add a message.

Quick Copy

This menu items only appears when tapping the Action Menu icon. It will copy the file being viewed to ServerControl's "My Local Files" folder on your iPhone, but it will not navigate you away from the current folder. You can later move the file to another folder, if you



Copy file to local folder

Tapping this will remember the location of this file and will automatically navigate you to the "My Local Files" entry in the Machine list. You can then navigate to the local folder, or create a new folder, where you wish to paste this file.

Bookmarks

Bookmarks are an important feature in ServerControl. They allow you to store links to anywhere ServerControl can browse to, and with a single tap, connect to the machine, connect to the share, navigate through the folders, open a file, and scroll to exactly where you left it.

You can create Bookmarks to folders and files on remote machines, or to folders and files stored on your iPhone.

Creating a Bookmark

When viewing a file, tapping the plus icon will pop up a window asking for the name of the new bookmark. This defaults to the name of the file, but can be anything you wish.

Accessing bookmarks

The list of Bookmarks can be accessed from almost every view, allowing you to quickly navigate to the places or files



you use the most.

The bookmark icon is available on the Main view, on each folder view, and the document view. Tapping it will bring up the list of Bookmarks, and this screen is explained in detail on the next page.

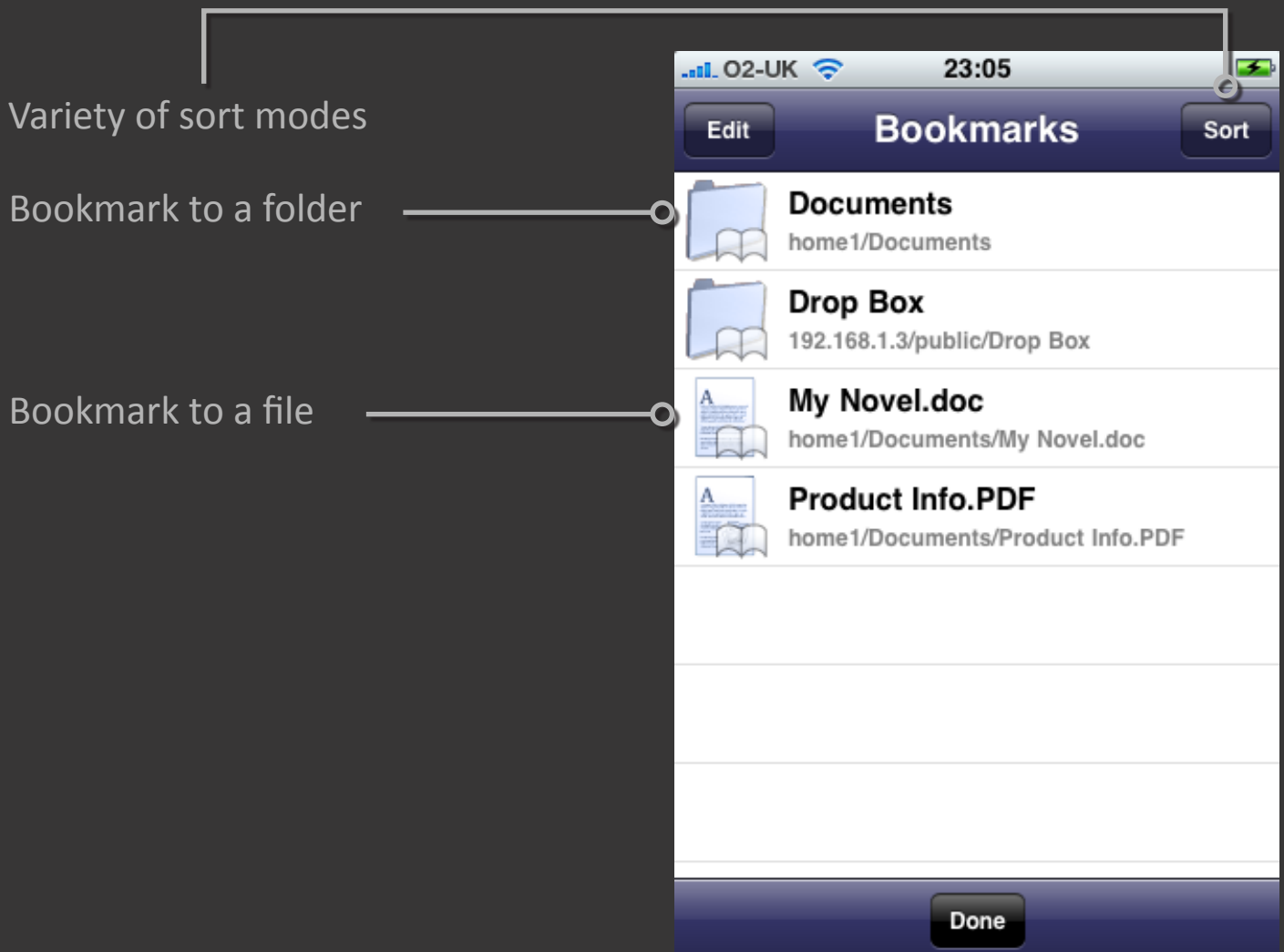
Bookmark List

The Bookmark list shows every Bookmark, whether the destination is to a remote machine or the local iPhone.

Simply tap a Bookmark and the machine will be connected to, and navigated to the appropriate folder, and if the Bookmark is to a file, will open the file and scroll to the relevant position.

Deleting bookmarks

Bookmarks can be deleted by either entering Edit mode by tapping the Edit button, or by swiping right to left across the right-hand side of the Bookmark row.



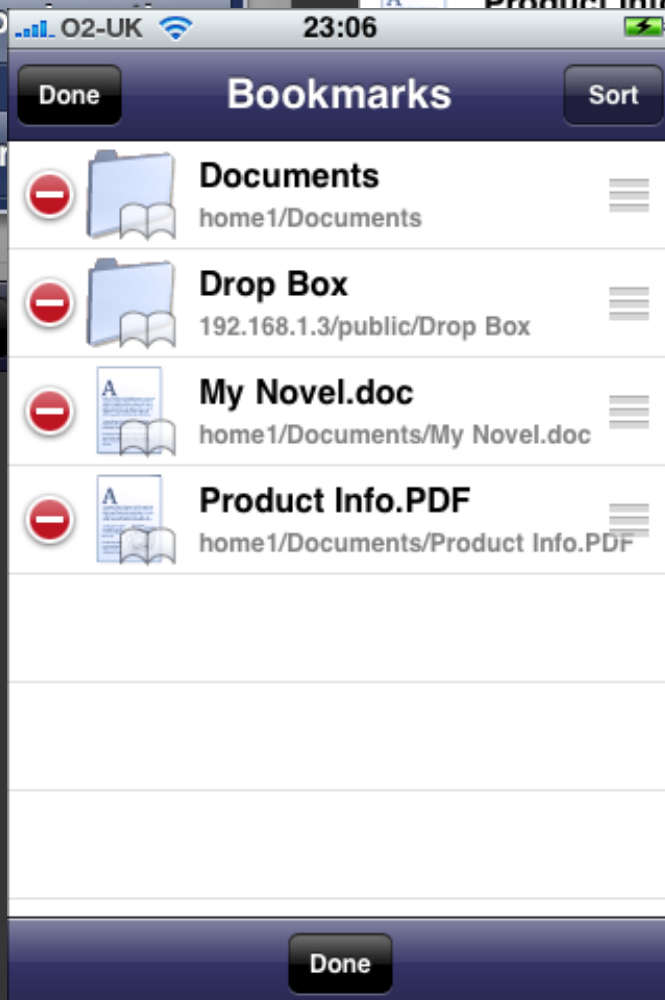
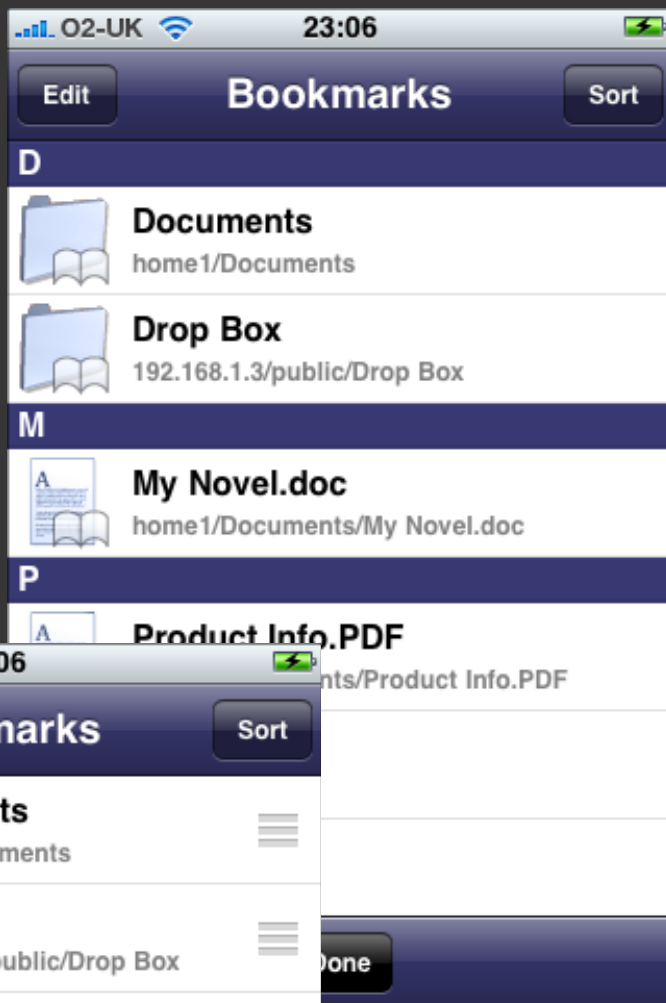
Sorting Bookmarks

Bookmarks can be sorted in 3 predefined ways, as well as being user-defined.

Bookmark sort options



Sorted Alphabetically by name



Manually sorting Bookmarks

Config

This view is where you set ServerControl's global configuration options.

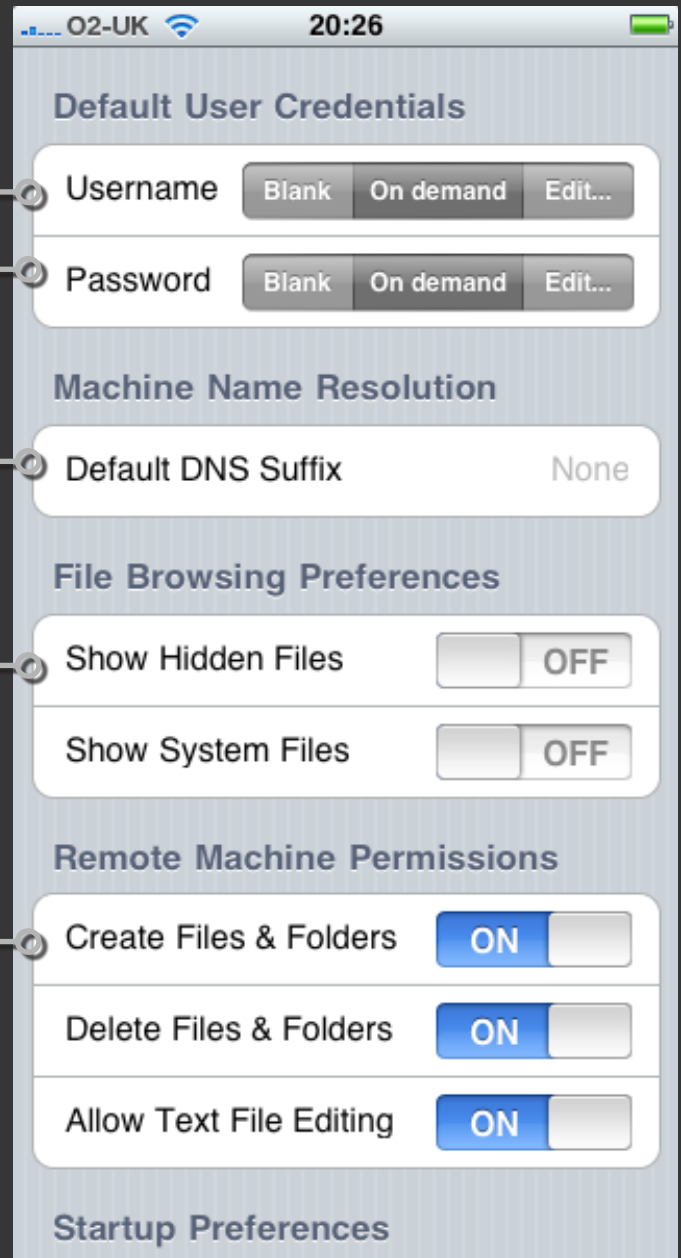
Each new machine will use this Username when initially created.

Each new machine will use this Password when initially created.

Each new machine will use this DNS suffix when initially created. Typically set this to be the DNS domain name of your company.

Not showing Hidden and System files can make browsing Mac and Linux folders much less cluttered.

These 3 options control the level by which ServerControl is allowed to modify remote files and folders. Disabling them can prevent accidental modifications or deletions.



ServerControl

Manage your Servers Anywhere

Switch this on to automatically remember the last folder or file being viewed, and navigate back to it on startup.

The total amount of space that local files are taking up on your iPhone.

Tap this button to remove all temporary files that are used internally by ServerControl. No files that you have copied to your iPhone will be deleted.

